

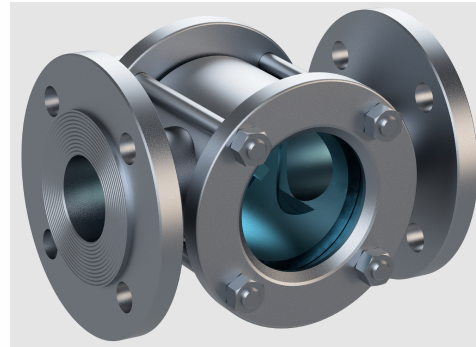
Double window sight glass HLC-105

ENG

FEATURES

HLC 105 Sight Glass is used in order to view for flow direction and regime on the lines. Its installed after valves, filters, steam traps and other line instruments for monitoring the steam leakage.

Deflector part of inside the Sight glass undulates the flow for more visibility the leakage. Special Glasses resistant to pressure and temperature are used. There are no moveable parts.



Applications

Condensate, Hot and cold Water Lines
Steam Lines
LPG, LNG, Natural Gas Lines
Petroleum and Fuel Oil Lines
Food, Pharmaceutical and Chemical Industry

WORKING CONDITIONS

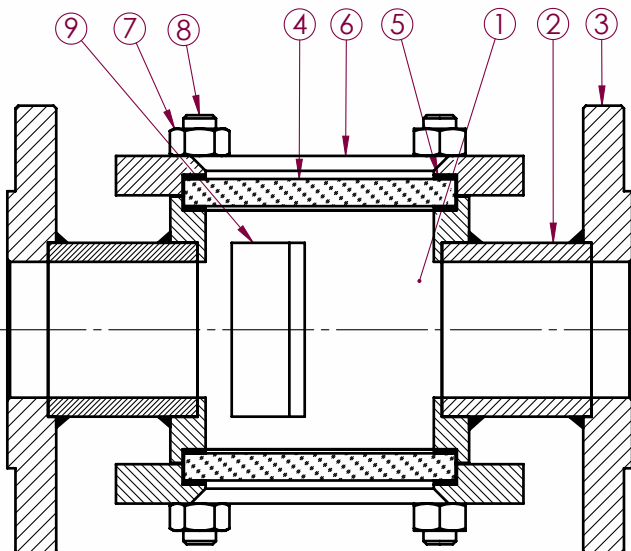
Nominal Pressure	PN16	
Max. Working Pressure	PMO	16 Bar
Max. Working Temperature	TMO	150 °C

INSTALLATION and MAINTENANCE

- Before installation decide the appropriate sight glass to the line.
- Check Flow Rate direction and installation direction.
- Deflector Part of the Sight Glass must be mounted on the upper side.
- Do not use the Sight Glass over the maximum work temperature and Pressure.

Connection Type

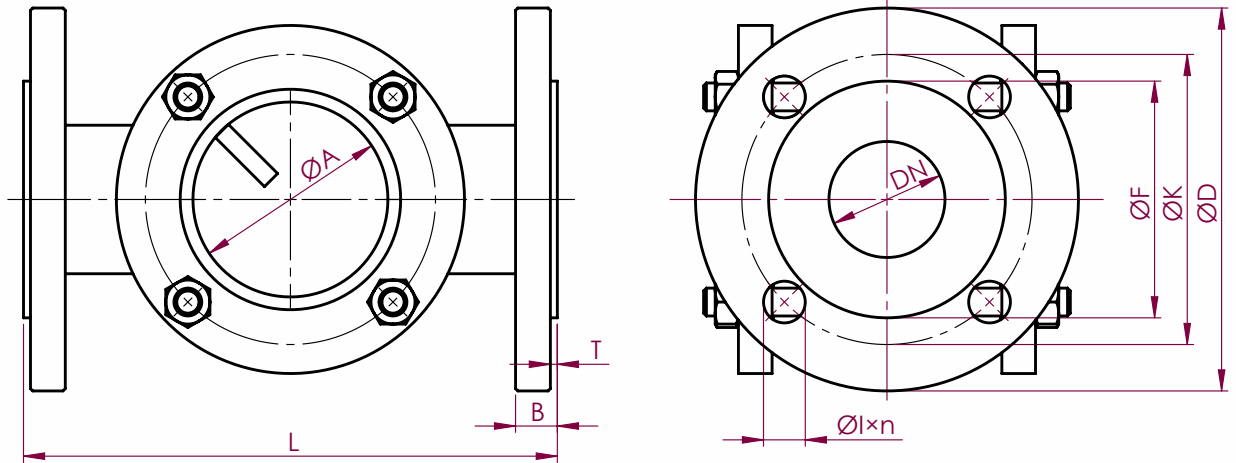
- 1/2" ~ 2" Screwed BSP
- DN15 ~ DN200 Flanged PN16 - EN 1092-1



NO	Part Description	Material	Quantity
1	Body	ST37-2	1
2	Connection Pipe	ST37-2	2
3	Connection Flange	ST37-2	2
4	Sight Glass	Sodalime	2
5	Gasket	PTFE	4
6	Glass Cover	ST37-2	2
7	Nut	8.8	8
8	Stud	ST37-2	4
9	Deflector	ST37-2	1

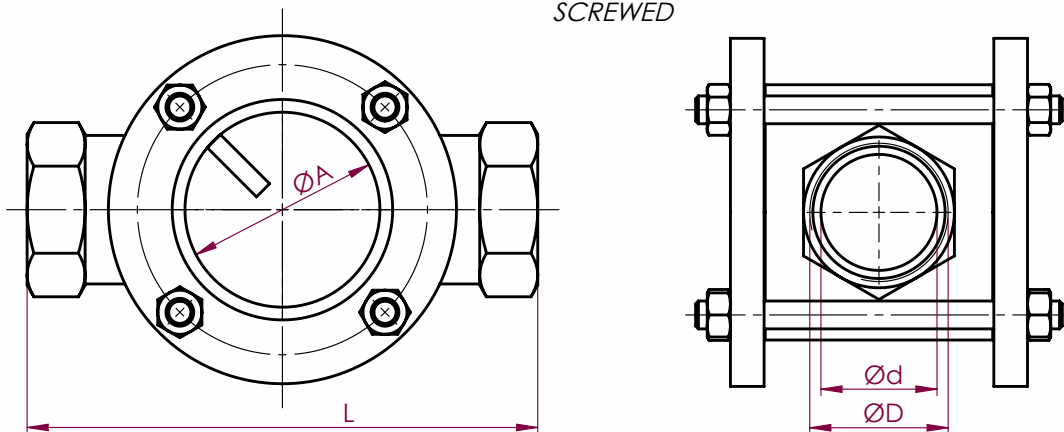
DIMENSIONS

FLANGED



DN	L	ØD	ØK	ØF	Øl×n	B	T	ØA	Kg
15	130	95	65	45	Ø14×4	14	2	40	2,8
20	150	105	75	58		16		40	3,5
25	160	115	85	68	16	48		4,3	
32	180	140	100	78	16	68		6,7	
40	200	150	110	88	Ø18×4	16	3	68	7,2
50	230	165	125	102		18		84	11,5
65	290	185	145	122	18	100		17,8	
80	310	200	160	138	20	100		21	
100	350	220	180	158	Ø18×8	20		130	31,2
125	400	250	210	188		22		150	39
150	450	285	240	212		22		200	55,8
200	500	340	295	268		Ø22×12		24	250

SCREWED



ØD	Ød	L	ØA	Kg
1/2"	15	100	40	1,6
3/4"	20	120	40	1,7
1"	25	135	48	2,2
1 1/4"	32	160	68	3,7
1 1/2"	40	185	68	4,2
2"	50	220	84	7