

THERMOSTATIC FLOAT AND STEAM COLLECTORS HSK-20
(1/2"-1", DN15-DN25)

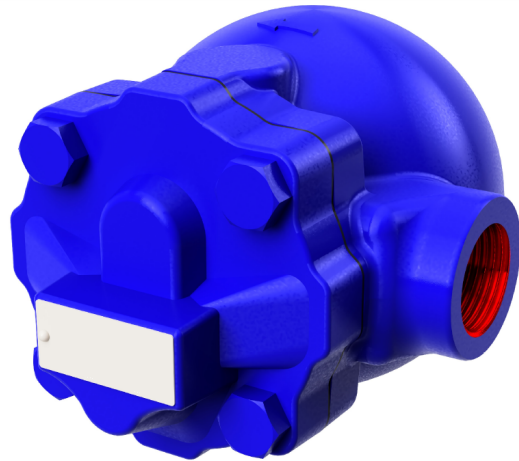
ENG

FEATURES

HSK-20 is a float steam trap with integral air vent. HSK-20 can be installed both horizontally and vertically but if any other requirements informed before production our standart production is horizontally which allows flow media from right to left direction.

Applications

- Heat Exchanger
- Large Air Heaters
- Iron Machines
- Drying Units
- Pressing Units
- Tanks, Pans, Ovens



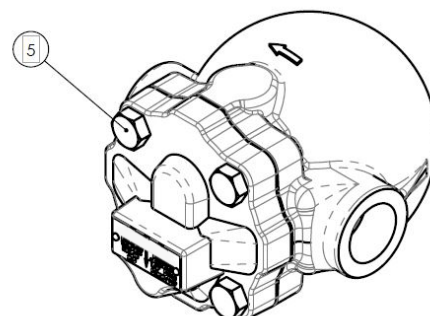
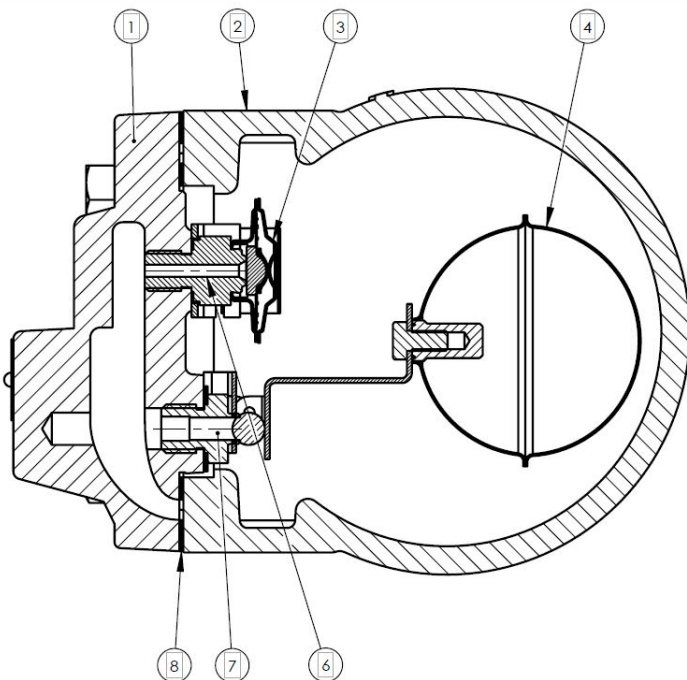
WORKING CONDITIONS

Max.Working Pressure	PMO	Bar	14
Max.Working Temp.	TMO	°C	250
Max.Diff.Pressure	PMX	Bar	14
Body			
Max.Allowable Pressure	PMA	Bar	16
Max.Allowable Temperature	TMA	°C	250

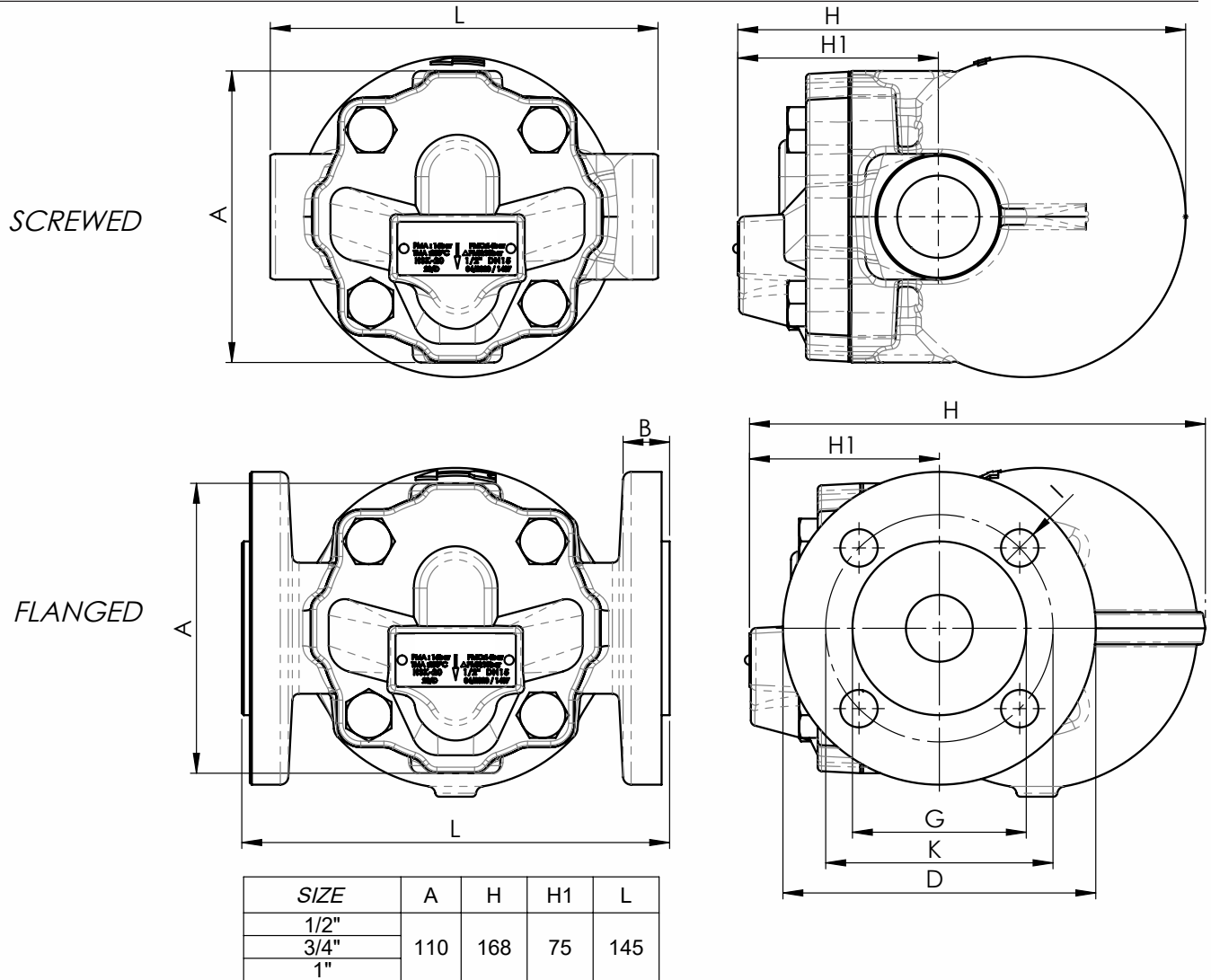
- CONNECTION TYPE : DN15 - DN20 -DN25
Flanged 1/2" - 3/4" - 1" Screwed BSP or NPT
- INSTALLATION
Check flow rate direction and installation direction.
- SAMPLE ORDER
HSK-20 1/2"
Please inform connection type, steam pressure, steam temperature, volume of condensate, delta P

HSK20 Ball float steam trap complies of requirements of the european Pressure Equipment Directive PED 97/23/EC. It is suitable to use for flow medias in group 2. No need for CE marking acc. to article 3,3

1	Cover	GGG 40,3
2	Body	GGG 40,3
3	Capsule	AISI 304
4	Float	AISI 304
5	Bolt	8,8
6	Capsule Seat	AISI 304
7	Float Seat	AISI 431
8	Cover Gasket	Graphite



DIMENSIONS



SIZE	A	H	H1	L
1/2"	110	168	75	145
3/4"				
1"				

SIZE	A	H	H1	L	D	K	G	I	B
DN15	110	171	71	150	95	65	45	Ø14	14
DN20				160	105	75	58		16
DN25				160	117	85	65		18

FLOW RATE CAPACITY (Kg /h)

Size	DIFFERANTIAL PRESSURE (BAR)															
	0,1	0,3	0,5	0,7	1	1,5	2	3	4,5	6	7	8	9	10	12	14
1/2 -3/4 4,5 bar	105	180	210	250	280	320	380	425	500							
1/2-3/4 10 bar	55	87	110	135	160	180	200	240	290	320	340	370	390	400		
1/2-3/4 14 bar	38	60	75	88	102	120	145	180	200	220	230	250	270	280	290	310
1" 4,5 bar	300	450	550	605	700	780	890	1000	1220							
1" 10 bar	105	180	210	250	280	320	380	425	500	580	600	620	660	690		
1" 14 bar	55	87	110	135	160	180	200	240	290	320	340	370	390	400	440	490