

DISC CHECK VALVE HDC 79

FEATURES

HDC 79 disco checkvalves are wafer type checkvalves which its length is short. Because of its design there are so many advantages such as lightweight; less volume; less installation cost and easy installation.

APPLICATIONS

After pumps
HVAC

Iron and Steel Industry
Mineral Oil Industry
Marine Applications

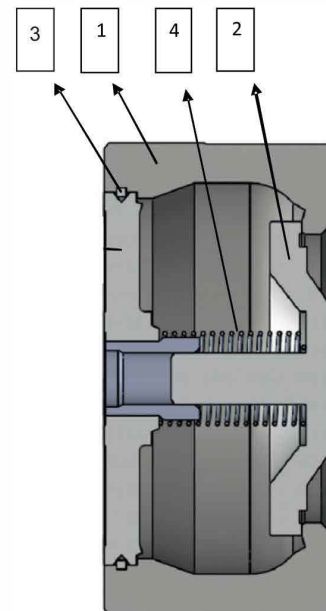


WORKING CONDITIONS

Size	DN 125-150-200		
Pressure	PN 16		
Working Pressure	16	14	13
Working Temperature	120	200	300
Min. Temperature	-10°C		
DIN	BS		
DIN EN 1092-1 PN10/16	DBS10 TABLE D, E, F		

MATERIAL LIST

Body	GG25 GG25
Disc	GG25 GG25
Piston Ring	Stainless Steel AISI 304
Spring	Stainless Steel AISI 302



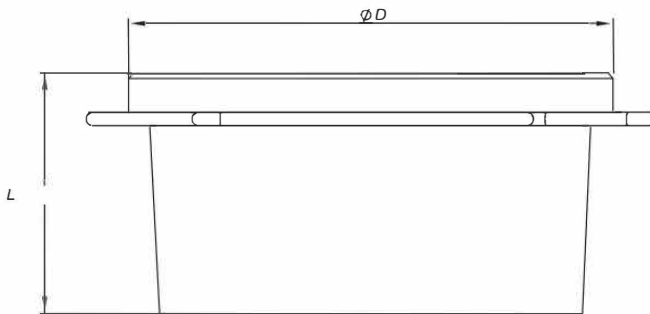
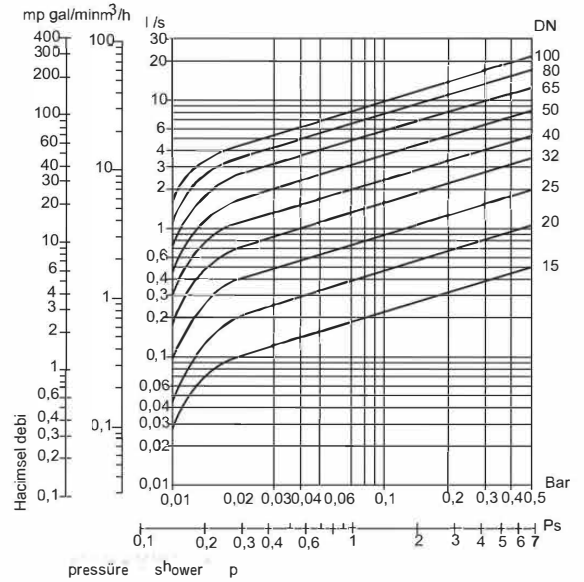
HOSE-EXPANSION JOINT-LEVEL CONTROL-STEAM TRAP

DISCHARGE

Graphic is according to 20C deg water. In order to read pressure drop for other flow media; it is required to calculate flow which is equal to water volume

$$\dot{V}_w = \dot{V} \cdot \sqrt{\frac{\rho}{1000}}$$

- \dot{V}_w Flow rate equivalent to water volume m³/h³
- ρ Density of fluid for business terms kg/m³
- \dot{V} Volumetric flow of fluid for operating conditions m³/h³



OPENING PRESSURE (mbar)				
Valve Direction				
	Without Spring		With Spring	
DN				
125	10.5	31	20.5	10
150	11.5	33	21.5	10
200	11.2	32.4	21.2	10

DIMENSIONS

DN	L	D	V
125	90	130	6,5
150	106	130	8,5
200	142	138	14,5

