

## THERMODYNAMIC STEAM TRAP HDT 37

ENG

### FEATURES

HTD-37 Thermodynamic Steam Trap Body material is forged steel and inner parts are stainless steel. Disc and Seat material is hardened. Operating surface precision machined for perfect leakproofing.  
HTD-37 Inner filter which can be also maintained very easily.  
Spare parts are also available.

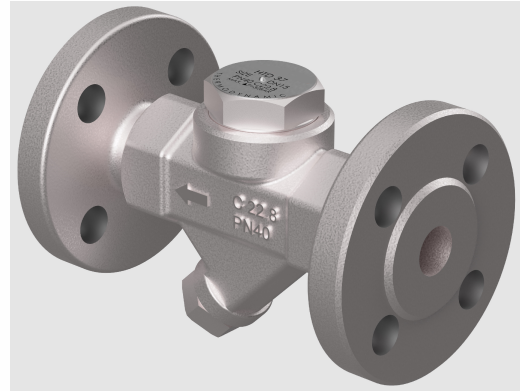
### Applications

Iron Machines

Drying Units

Pressing Units

Steam Jacket Pipelines



### WORKING CONDITIONS

Max. Working Pressure	PMO	bar	46
Max. Working Temp.	TMO	°C	400
Max. Diff. Pressure	PMX	bar	32
<b>Body</b>			
Max. design Pressure	PMA	bar	51
Max. Design Temp	TMA	°C	400

#### CONNECTION TYPE :

DN 15- 20 -25 Flanged  
1/2"-3/4"-1" Screwed BSP or NPT

#### INSTALLATION

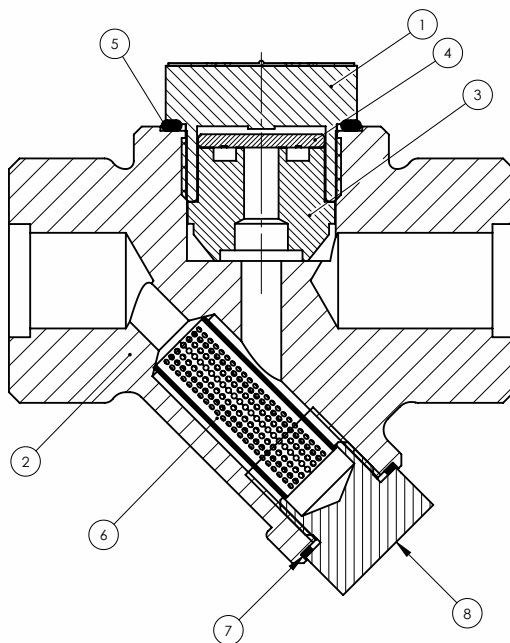
Check flow rate direction and installation direction.

#### SAMPLE ORDER

HTD-37 BSP 1/2"  
Please inform connection type, steam pressure, steam temperature, volume of condensate, delta P

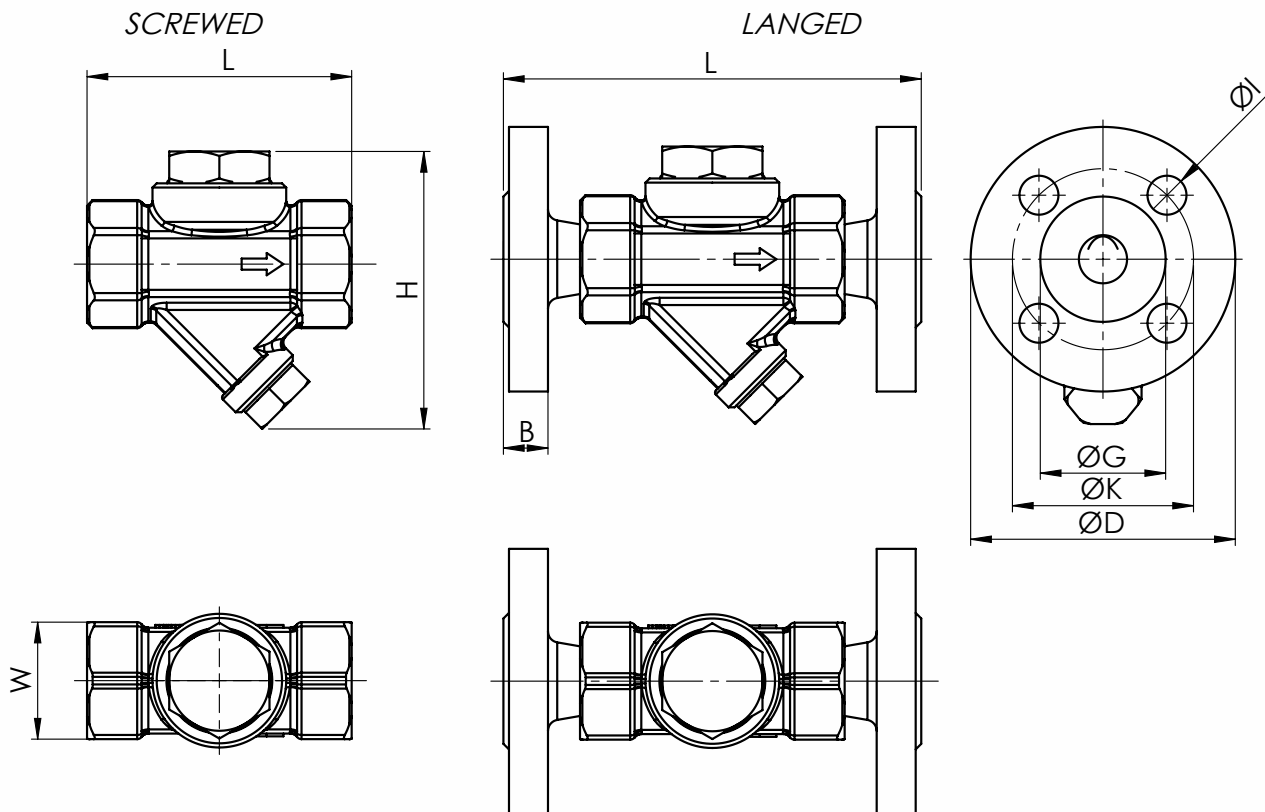
#### PED

HTD-37 Thermodynamic Steam Trap complies of requirements of the european Pressure Equipment Directive PED 97/23/Ec. It is suitable to use for flow medias in group 2.  
No need for CE marking acc. to article 3,3



1	Cover	AISI 303
2	Body	C22,8
3	Seat	AISI 420
4	Disc	AISI 420
5	Cover Gasket	AISI 304
6	Filter	AISI 304
7	Filter Gasket	AISI 304
8	Cap Nut	ST37-2

**DIMENSIONS**



SIZE	L	H	W
1/2"	95	100	42
3/4"			
1"			

SIZE	L	H	ØD	ØK	ØG	ØI	B
DN15	150	107	95	65	45	Ø14	14
DN20			105	75	58		16
DN25			115	85	68		18

**DISCHARGE CAPACITY (kg/h)**

SIZE	DIFFERANTIAL PRESSURE ( bar )																
	0,3	0,7	1	1,5	2	3	4	5	7	8	9	10	14	20	25	30	32
1/2" - DN 15	120	170	180	200	250	320	360	420	475	530	475	600	750	920	975	1100	1200
3/4" - DN 20																	
1" - DN 25																	