

Separators
HSF-16 HSB-16
HSF-40 HSB-40

ENG

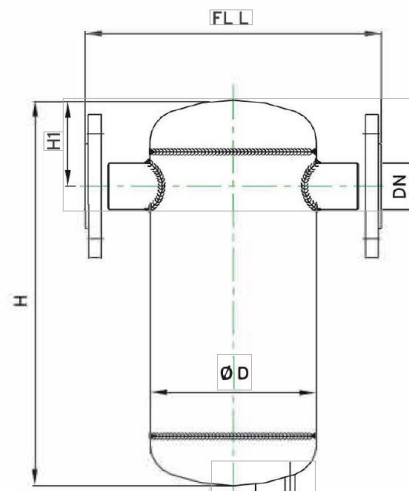
Separators are fixtures that separate 98% of the condensed water in the steam lines from the installation. Vuksek rand1manl1 is specially designed to maintain separation efficiency in lines with variable steam speed and operating up to a maximum of 40 bar. This product can be custom made from stainless steel for process systems.

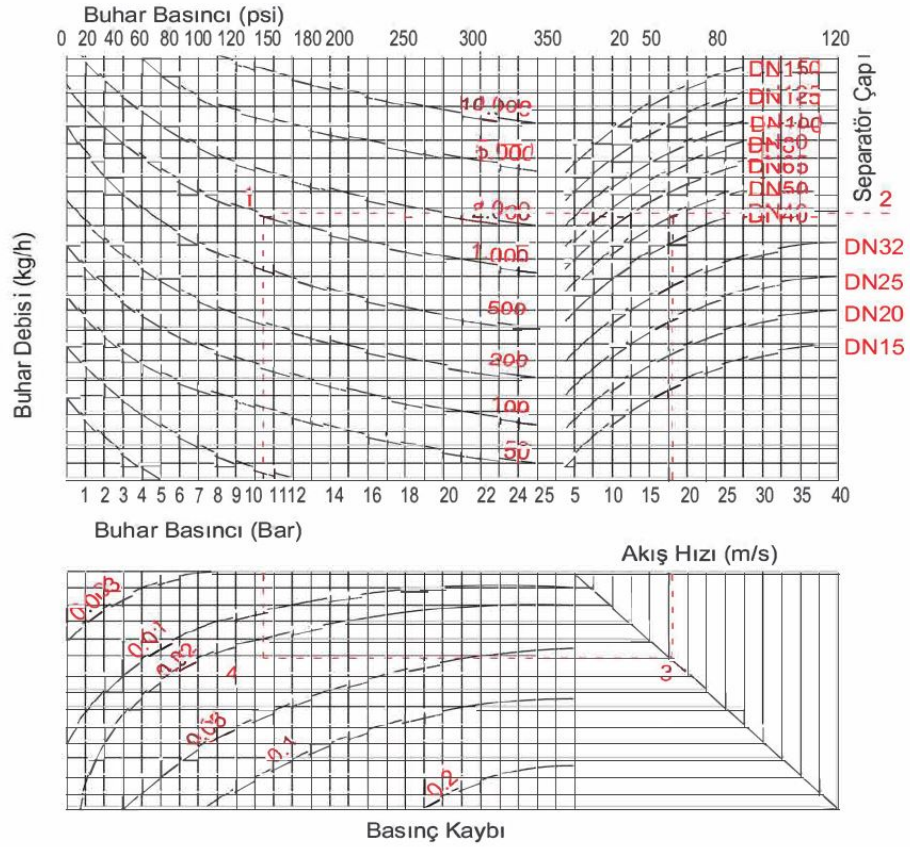
ADVANTAGES:

Increases productivity and production quality. It reduces maintenance cost and downtime, prolongs the life of plant and control valves in steam and air systems, eliminates water hammer and damage and the maintenance costs it will cause, simple, robust design does not require maintenance, wide selection of materials and connections, steam, air or It provides net measurement of gas (when used to protect Ak1ş meters), provides fuel economy. It has high strength. Body welded construction and carbon steel manufacturing. Pressure strength and s1zd1rmazl1k tests are applied in all manufacturing items.



DN	FHL	FHL	H1	Ø
15	180	300	50	89
20	230	380	60	114
25	230	400	60	114
32	250	420	80	140
40	300	460	90	168
50	300	520	90	168
65	400	620	100	219
80	450	710	130	273
100	500	850	160	323
125	600	1000	170	355
150	600	1150	180	406





USING THE DIAGRAM FOR STEAM

Let's draw the steam pressure as 10 bar and the flow rate as 1000 kg / h as 1-4.

Let's stretch 1-2 horizontal lines.

Any separator curve Dn50) cut with line 1-2 in the surrounding area will be played with full rand1man. Ak1ş h1z1 2-3 vertical lines are determined.(17m/s)

The pressure drop is found by crossing lines 1-2 and 3-4. (0.03 bar)