

Filter Model 090

ENG

It enables the filtration and accumulation of suspended solid particles, dragged by fluids, for their subsequent removal. In this way, we protect water control and regulation equipment underneath the filter and prevent collateral damage.

Works with: steam, hot and superheated water, thermal oil, process water, gases, glycol, compressed air, neutral fluids, etc.
Applications in: processing industry, shipbuilding, air conditioning systems, thermal oil installations and systems, vacuum installations, etc. In accordance with the requirements of Directive 2014/68/EU.

Specifications

- Distances between flanges compliant with EN 558-1.
- Flanges compliant with EN 1092-1.
- Designed to be environmentally friendly.
- Materials carefully selected for their resistance to wear, temperature and corrosion.
- Filter free from silicones and asbestos.
- Simple construction.
- Assembly vertically downwards or horizontally with the cover on the lower section. Easy installation.
- Interior design of the body is designed to provide a favourable flow profile. This guarantees a very low pressure loss. — Long life cycle with high operating efficiency.
- Screw-on cover and threaded cap that facilitate drainage, maintenance and cleaning of the strainer. Practically maintenance-free.
- Each one of the filters is rigorously tested and checked.
- All of the components are numbered, registered and controlled. If it is previously requested, the filter will be accompanied

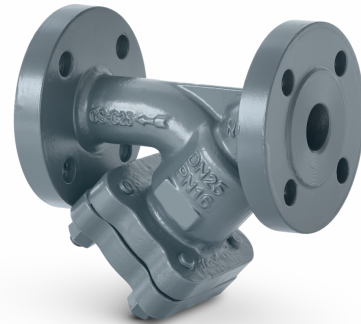
by certificates for materials, strains, tests and performance, as well as the instruction manual in accordance with E.P.D. 2014/68/EU.

IMPORTANT

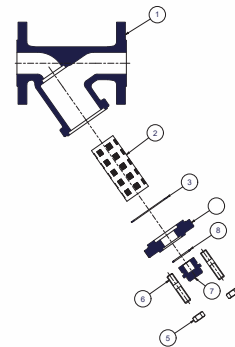
If necessary, we recommend the use of Model 008 thermal and acoustic insulation jackets.

On demand:

- Can be made from other types of materials, for special working conditions (high temperatures, fluids, etc.).
- Other connections.



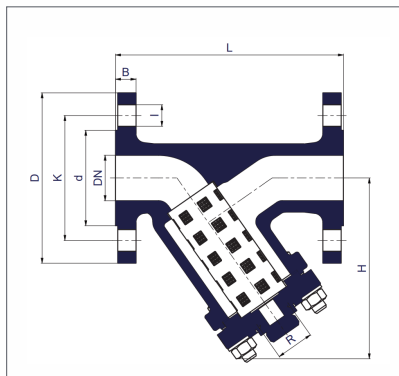
PIECE N°	PIECE	MATERIAL														
		NODULAR CASTING				CARBON STEEL				STAINLESS STEEL						
1	Body	Nodular casting (EN-5.3103)				Carbon steel (EN-1.0619)				Stainless steel (EN-1.4408)						
2	Strainer	Stainless steel (EN-1.4301)				Stainless steel (EN-1.4301)				Stainless steel (EN-1.4401)						
3	Gasket body	Graphite + Stainless steel (EN-1.4301)				Graphite + Stainless steel (EN-1.4301)				Graphite + Stainless steel (EN-1.4301)						
4	Cover	Carbon steel (EN-1.0619)				Carbon steel (EN-1.0619)				Stainless steel (EN-1.4408)						
5	Nut	Carbon steel (EN-1.1141)				Carbon steel (EN-1.1141)				Stainless steel (EN-1.4301)						
6	Stud	Carbon steel (EN-1.1181)				Carbon steel (EN-1.1181)				Stainless steel (EN-1.4401)						
7	Cap	Carbon steel (EN-1.1151)				Carbon steel (EN-1.1151)				Stainless steel (EN-1.4401)						
8	Gasket	Graphite + Stainless steel (EN-1.4301)				Graphite + Stainless steel (EN-1.4301)				Graphite + Stainless steel (EN-1.4301)						
DN		15 to 200 (EN. ANSI)														
PN		16				40				40						
SERVICE CONDITIONS	PRESSURE IN bar	16,00	15,50	14,70	11,2	40,00	37,10	33,30	23,80	40,00	40,00	33,70	27,40			
	MAX.TEMP. IN °C	*RT				150	200	350	*RT	100	200	400	*RT	100	200	400
	MIN.TEMP. IN °C	-10				-10				-60						



*Room Temperature (-10°C to 50°C).

MODEL		090																							
DN		15				20				25				32				40				50			
NPS		1/2"				3/4"				1"				1 1/4"				1 1/2"				2"			
CONNECTIONS		I - Flanges PN-16 EN 1092-2																							
		II - Flanges PN-40 EN 1092-1																							
		III - Flanges class 150 lbs ASME/ANSI B16.5																							
		IV - Flanges class 300 lbs ASME/ANSI B16.5																							
H (PN16, PN40)		85				95				110				125				145				155			
H (class 150 lbs and 300 lbs)		63				70				82				89				141				150			
L EN-558 (PN-16, PN40)		130				150				160				180				200				230			
L ASME B16.10 (class 150 lbs)		140				150				160				180				200				203			
L ASME B16.10 (class 300 lbs)		152				178				203				216				229				267			
D		I	II	III	IV	I	II	III	IV	I	II	III	IV	I	II	III	IV	I	II	III	IV	I	II	III	IV
K		95	95	90	95	105	105	100	115	115	115	110	125	140	140	115	135	150	150	125	165	165	165	150	165
I		14,00	14,00	15,90	15,90	14,00	14,00	15,90	19,10	14,00	14,00	15,90	19,10	19,00	18,00	15,90	19,10	19,00	18,00	15,90	22,20	19,00	18,00	19,10	19,10
b		14,00	16,00	11,20	14,30	16,00	18,00	12,70	15,90	16,00	18,00	14,30	17,50	18,00	18,00	15,90	19,10	19,00	18,00	17,50	20,70	19,00	20,00	19,10	22,30
A		1,00				1,00				1,00				1,00				1,00							
C		0,4				0,4				0,4				0,4				0,4							
R		3/8"				3/8"				3/4"				3/4"				1"							
No. DRILL HOLES		4				4				4				4				4				8			
CODE 2301-090	WEIGHT IN kgs.	NODULAR CASTING																							
		CARBON STEEL																							
		STAINLESS STEEL																							
		NODULAR IRON																							
		8024				80241				80242				8344				83441				83442			
		8022				80221				80222				8342				83421				83422			

MODEL		090																							
DN		65				80				100				125				150				200			
NPS		2 1/2"				3"				4"				5"				6"				8"			
CONNECTIONS		I - Flanges PN-16 EN 1092-2																							
		II - Flanges PN-40 EN 1092-1																							
		III - Flanges class 150 lbs ASME/ANSI B16.5																							
		IV - Flanges class 300 lbs ASME/ANSI B16.5																							
H (PN16, PN40)		175				210				230				270				300				385			
H (class 150 lbs and 300 lbs)		170				196				237				270				310				400			
L EN-558 (PN-16, PN40)		290				310				350				400				480				600			
L ASME B16.10 (class 150 lbs)		216				243				292				356				406				495			
L ASME B16.10 (class 300 lbs)		292				318				356				400				445				559			
D		I	II	III	IV	I	II	III	IV	I	II	III	IV	I	II	III	IV	I	II	III	IV	I	II	III	IV
K		185	185	180	190	200	200	190	210	220	235	230	255	250	270	255	280	285	300	280	320	340	375	345	380
I		145,00	145,00	139,70	149,20	160,00	160,00	152,40	168,30	180,00	190,00	190,50	200,00	210,00	220,00	215,90	235,00	240,00	250,00	241,30	269,90	295,00	320,00	298,50	330,20
b		19,00	18,00	19,10	22,20	19,00	18,00	19,10	22,20	19,00	22,00	19,10	22,20	19,00	26,00	22,20	22,20	23,00	26,00	22,20	22,20	23,00	30,00	22,20	26,00
A		1,25				1,25				1,60				1,60				1,60							
C		0,440				0,440				0,440				0,440				0,440							
R		1"				1"				1 1/2"				1 1/2"				1 1/2"							
No. DRILL HOLES		4				8				8				8				8				12			
CODE 2301-090	WEIGHT IN kgs.	NODULAR CASTING																							
		CARBON STEEL																							
		STAINLESS STEEL																							
		NODULAR IRON																							
		8224				82241				82242				8304				83041				83042			
		8222				82221				82222				8302				83021				83022			



FLOW COEFFICIENT
EN 60534-2-3
Water at 20°C

DN	Kvs m3/h ΔP= 1 bar
15	4,60
20	10,30
25	16,50
32	27,20
40	42,00
50	64,50
65	98,00
80	149,00
100	234,00
125	374,00
150	454,00
200	852,00

