

## BIMETALLIC STEAM TRAPS HTF-46

### Features

**Hot Forging Steel-bodied bimetal thermostatic steam trap.  
For use with steam tracing lines, storage tanks.**

1. Saves energy by utilizing the sensible heat in condensate.
2. Includes a built-in device for removing scale and build-up from the valve seat..
3. Rapid venting of initial air and fast discharge of cold condensate reduce start-up time.
3. Inline access to internal parts simplifies cleaning and reduces maintenance costs.
4. Built-in screen ensures trouble-free operation.
5. Can be used as an automatic non-freeze valve.



**CAUTION**

DO NOT REMOVE CAP NUT OR COVER  
WHILE TRAP IS UNDER PRESSURE

Allow trap body temperature to cool to room temperature  
before removing cap nut or cover. Failure to do so may  
result in burns or other injury.  
READ INSTRUCTION MANUAL CAREFULLY



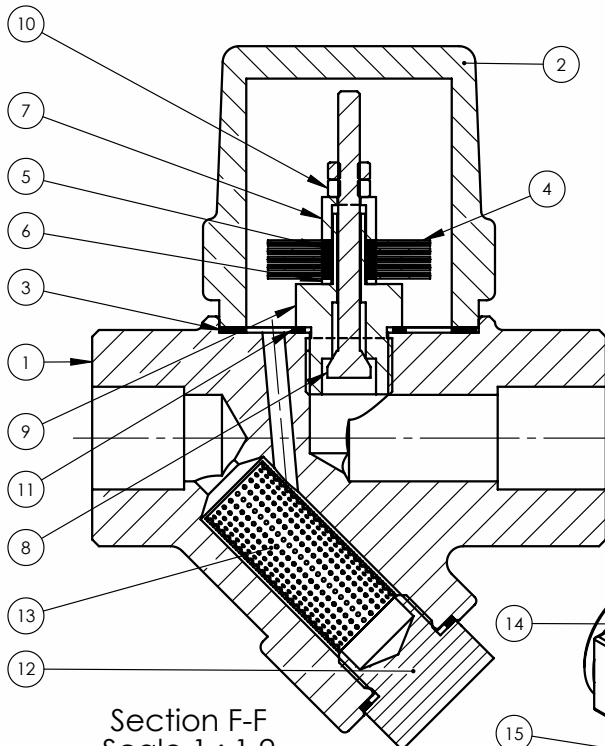
### Specifications

Max. Working Pressure	PMO	Bar	17
Max. Working Temp.	TMO	°C	250
Max. Differential Pressure	PMX	Bar	22
Max. Design Pressure	PMA	Bar	40
Max. Design Temp.	TMA	°C	400

The trap maybe installed either horizontally or vertically. UpSide-Down is not permissible

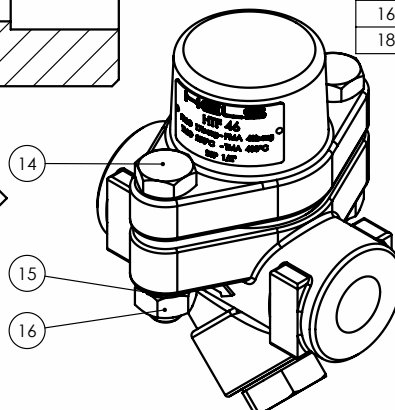


To avoid abnormal operation, accidents or serious injury,  
DO NOT use this product outside of the specifications range.  
Local regulations may restrict the use of this product to below the conditions quoted.



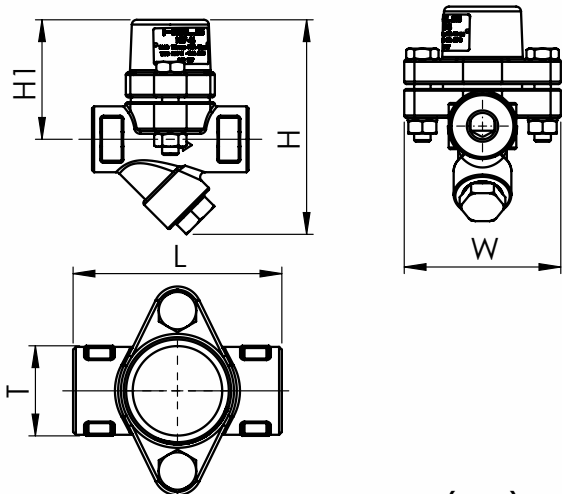
Section F-F  
Scale 1 : 1.2

NO	DESCRIPTION	MATERIAL
1	Frame	C22.8
2	Cover	C22.8
3	Cover Gasket	GRAPHITE
4	bimetal element	BIMETAL
5	Washer	AISI 304
6	Thrust Plate	AISI 304
7	SEAD CAP	AISI 304
8	VALVE STEM	AISI 420
9	VALVE SEAT	AISI 303
10	NUT ; M4 - DIN934	AISI 304
11	Valve Seat Gasket	AISI 304
12	plug with hex head	AISI 304
13	Filter	AISI 304
14	Bolt; M10x50 - DIN931	AISI 304
15	Spring Washer; M10 - DIN127	AISI 304
16	NUT; M10 - DIN934	AISI 304
18	HTF 46-ETIKET RENDER	1



Dimensions

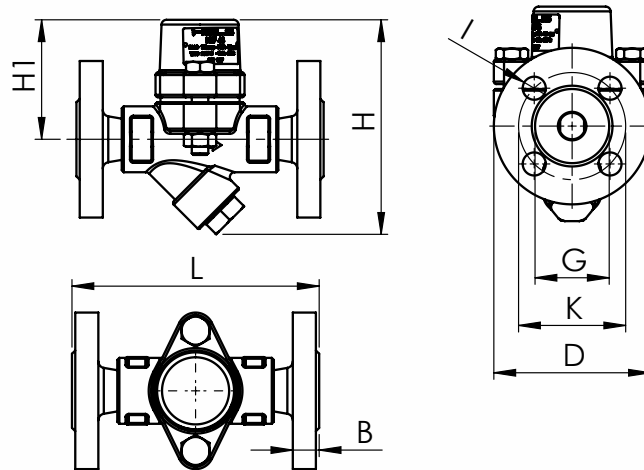
SCREWED



( mm )

	SIZE	L	H	H1	W	T
Screwed	1/2"	95	130	73	95	41
	3/4"					
	1"					

FLANGED



( mm )

	Size	L	H	H1	G	K	D	I	B
Flanged	DN15	150	130	73	Ø45	Ø65	Ø95	Ø14	16
	DN20				Ø58	Ø75	Ø105		
	DN25				Ø68	Ø85	Ø115		

Sizing Charts

MODEL	size	DIFFERENTIAL CAPACITY IN Kgs/H									
		0,5	1	2	4	6	8	10	12	14	17
HTF-46	1/2" , 3/4" , 1"	125	200	320	410	455	485	500	540	580	600
	DN15, 20, 25										