

Air and gas eliminator HA-20

FEATURES

Due to moisture and condensate in compressed air lines and pressurized air tanks, the liquid contamination is observed. However, in order to keep the system life in safe, it is necessary to discharge the liquid without any air loss, continuously. HA 20D & HA 20F, which has very simple design and completely stainless steel inner parts, provides the system works in safety by charging the liquid from system, without causing any corrosion.



Applications

- Tanks
- Heat Exchanger
- Heating Batteries

WORKING CONDITIONS

Nominal Pressure	PN16		
Max.Allowable Pressure	PMA	Bar	16
Max.Allowable Temperature	TMA	°C	250
Max.Diff.Pressure	PMX	Bar	14
Max.Working Pressure	PMO	Bar	16
Max.Working Temp.	TMO	°C	250

- CONNECTION TYPE : DN15 - DN20 - DN25
 Flanged
 1/2" - 3/4" - 1" Screwed BSP or NPT

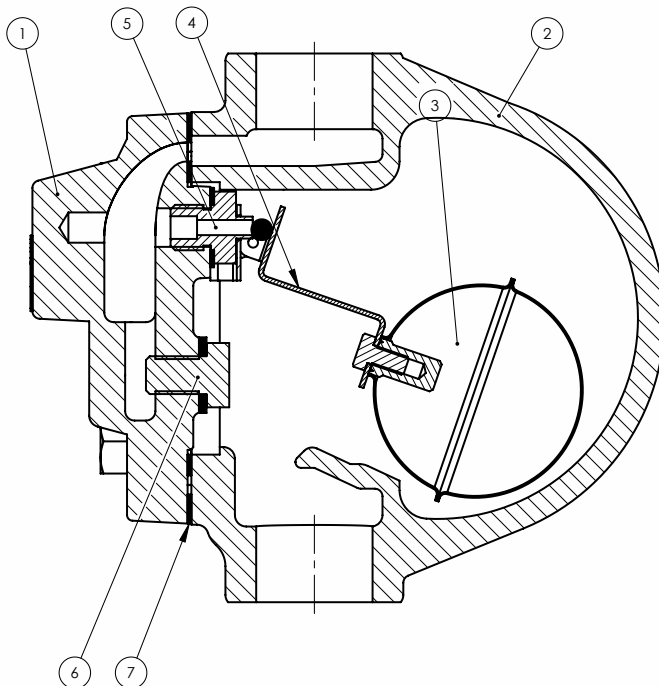
- INSTALLATION

Check flow rate direction and installation direction.

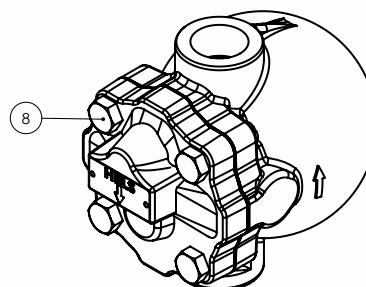
- SAMPLE ORDER
 HA - 20 1/2"
 Please inform connection type, steam pressure, steam temperature, volume of condensate, delta P

PED

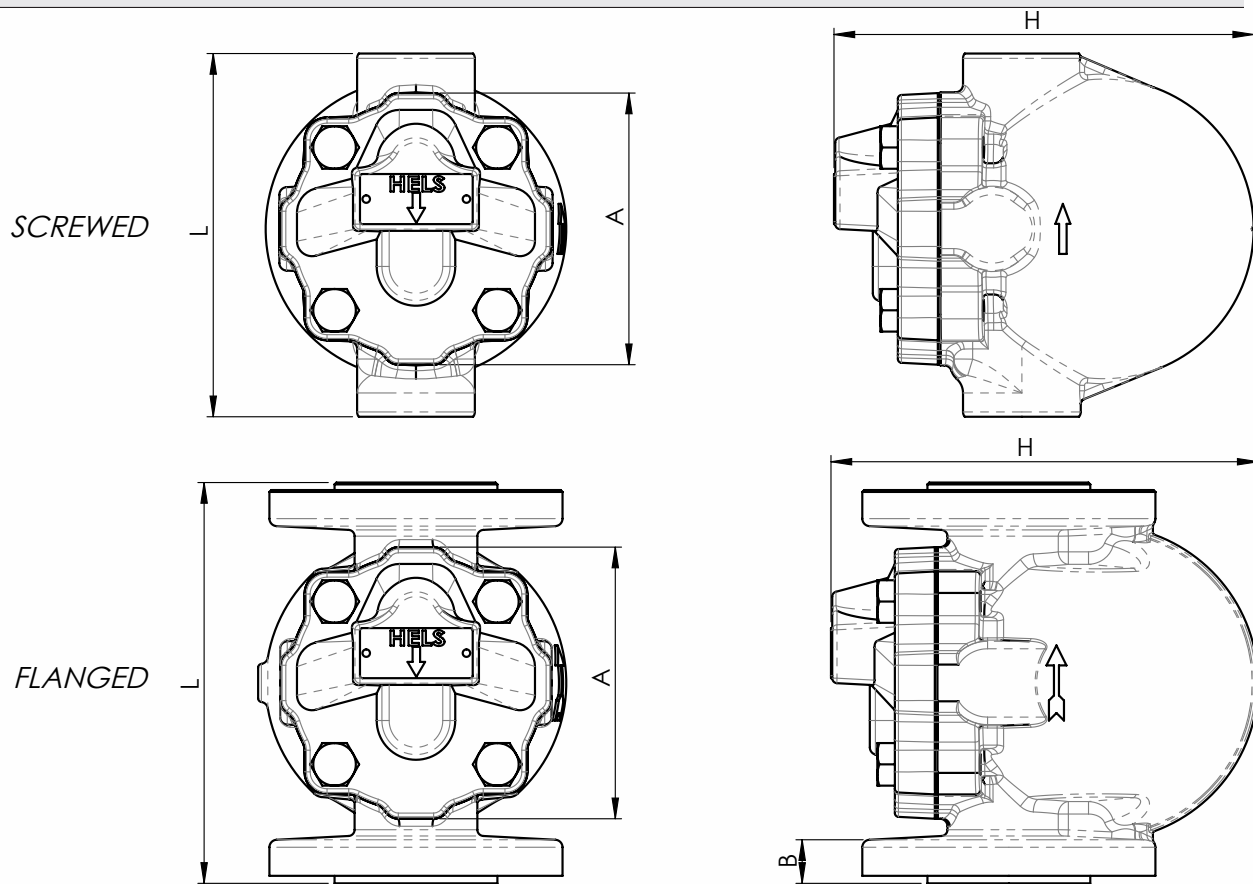
HA20 Ball float steam trap complies of requirements of the european Pressure Equipment Directive PED 97/23/Ec. It is suitable to use for flow medias in group 2. No need for CE marking acc. to article 3,3



1	Cover	GGG 40,3
2	Body	GGG 40,3
3	Float	AISI 304
4	Float Lever	AISI 304
5	Float Seat	AISI 431
6	Blind Bolt	AISI 304
7	Cover Gasket	Graphite
8	Bolt	8,8

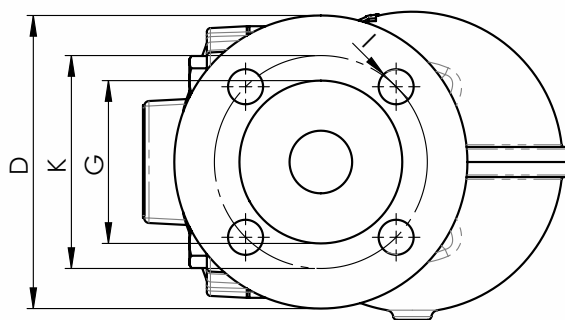


DIMENSIONS



SIZE	A	H	L
1/2"	110	168	145
3/4"			
1"			

SIZE	A	H	L	D	K	G	I	B
DN15	110	171	150	62	65	45	Ø14	14
DN20				105	75	58		16
DN25				160	115	85		65



FLOW RATE CAPACITY (dm³ / s)

Size	DIFFERANTIAL PRESSURE (BAR)												
	0,2	0,3	0,4	0,5	1	2	3	4	5	7	10	14	
HA 20	0,15	0,2	0,27	0,36	0,54	1	1,4	1,8	2,1	2,8	3,7	5	