

**AIR and GAS ELIMINATOR
 HA-24**

ENG

FEATURES

Due to moisture and condensate in compressed air lines and pressurized air tanks, the liquid centemination is observed. However, in order to keep the system life in safe, it is necessary to discharge the liquid without any air loss, continuously.

HA 21, which has very simple design and completely stainless steel inner parts, provides the system works in safety by charging the liquid from system, without causing any corrosion.

Applications

- Tanks
- Heat Exchanger
- Heating Batteries



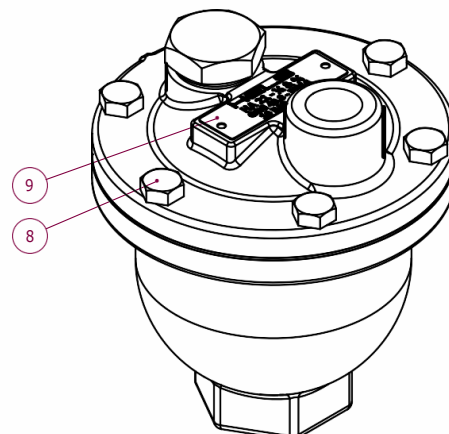
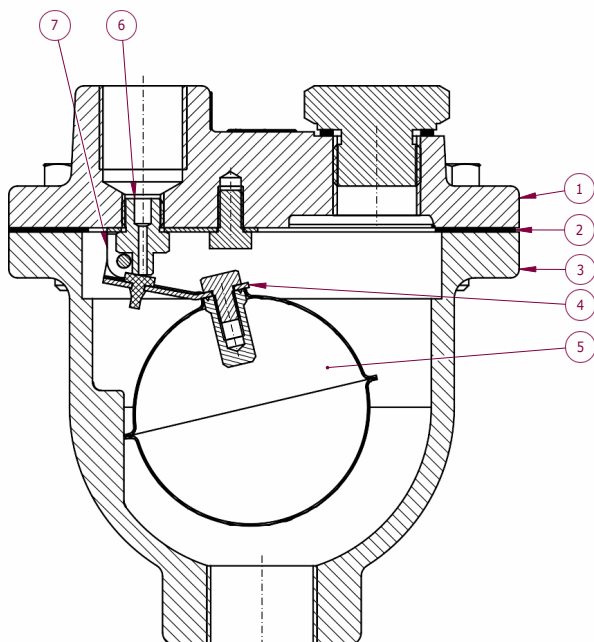
WORKING CONDITIONS

Nominal Pressure	PN16		
Max.Allowable Pressure	PMA	Bar	16
Max.Allowable Temperature	TMA	°C	200
Max.Diff.Pressure	PMX	Bar	14
Max.Working Pressure	PMO	Bar	16
Max.Working Temp.	TMO	°C	200

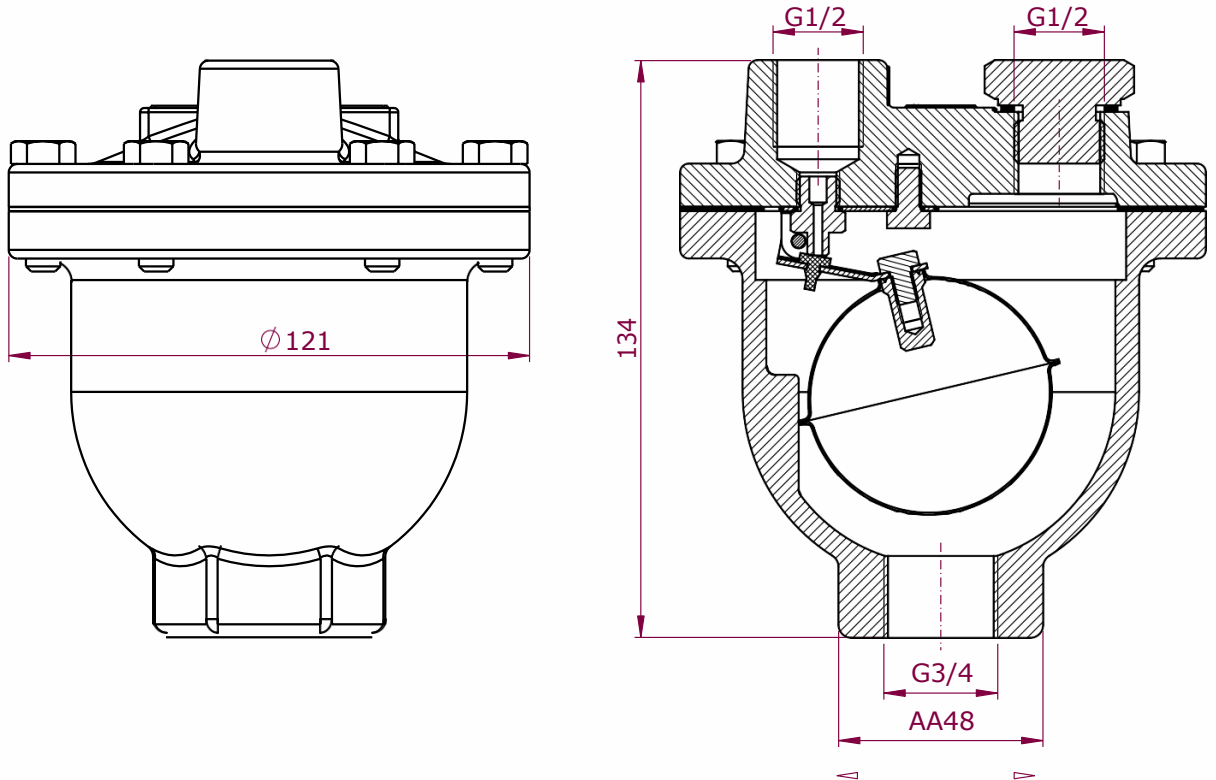
- **CONNECTION**
 INLET G 3/4" - OUTLET G 1/2"
- **INSTALLATION**

HA 21 Air Eliminator have to mounted at the highest point of steam line. Use a valve in front of The HA 21 Air Eliminator. Thus, You could isolate it from the system for repair and maintenance.

1	Bonnet	AISI304
2	Bonnet Gasket	Graphite
3	Body	AISI 304
5	Float Lever	AISI 304
4	Float	AISI 304
6	Float Seat	AISI 420
7	Float Lever Housing	AISI 304
8	Bolt	8,8
9	Name Plate	AISI 304



DIMENSIONS



FLOW RATE CAPACITY (dm³ / s)

Size	DIFFERANTIAL PRESSURE (BAR)											
	0,2	0,3	0,4	0,5	1	2	3	4	5	7	10	14
HA 21	0,15	0,2	0,27	0,36	0,54	1	1,4	1,8	2,1	2,8	3,7	5

AIR ELIMINATOR INSTALLATION

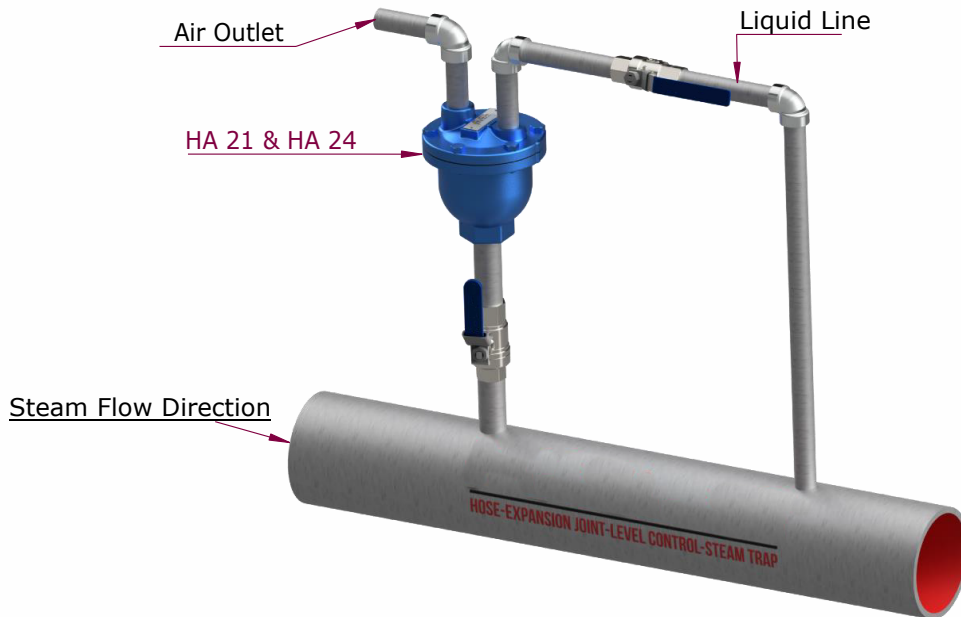


Foto a testi di proprietà della CNT Caspani S.r.l. **excelsior büche**[®]

